



City and County of San Francisco Emergency Response Plan

***ESF #11:
Animal Response Annex***





Contents

FOREWORD

| | |
|--|------------|
| Process Flowchart – Planned Event | <i>iii</i> |
| Process Flowchart – Unplanned Event..... | <i>v</i> |

SECTION 1: INTRODUCTION 1

| | |
|---|---|
| 1.1 Coordinating and Supporting Departments | 1 |
| 1.2 Overview of Department Responsibilities | 1 |
| 1.3 Purpose..... | 2 |
| 1.4 Scope | 2 |

SECTION 2: CONCEPT OF OPERATIONS..... 3

| | |
|--|----|
| 2.1 General Concepts | 3 |
| 2.1.1 Public Information..... | 3 |
| 2.1.2 Field Response..... | 4 |
| 2.1.3 Animal Sheltering | 5 |
| 2.1.5 Reunification of Pets with Owners..... | 6 |
| 2.1.6 Coordination With Other Agencies and Departments | 7 |
| 2.1.7 Volunteer / Donations Management..... | 8 |
| 2.2 Animal Response Organization and Structure..... | 9 |
| 2.2.1 Organization | 9 |
| 2.2.2 Animal Response Roles and Responsibilities | 10 |
| 2.3 Notification and Activation..... | 13 |
| 2.3.1 Notification | 13 |
| 2.3.2 Activation | 13 |
| 2.3.3 Response Actions..... | 14 |
| 2.3.4 Deactivation | 16 |

SECTION 3: PLANNING ASSUMPTIONS..... 17

LIST OF ABBREVIATIONS AND ACRONYMS..... 19

APPENDIX A: Animal Co-Location Shelter Sites 21

APPENDIX B: Veterinary Hospitals 25



TABLES

| | |
|--|----|
| Table 2-1: Public Information Priorities | 3 |
| Table 2-2: Animal Sheltering Priorities | 5 |
| Table 2-3: Animal Response Responsibilities | 10 |
| Table 2-4: Scalable Animal Response Activation | 14 |

FIGURES

| | |
|---|------------|
| Figure A: Planned Event Process Flow Chart | <i>iii</i> |
| Figure B: Unplanned Event Process Flow Chart..... | <i>v</i> |
| Figure 2-1: ESF #11 Organization | 9 |
| Figure A-1: Animal Co-Location Shelter Sites..... | 21 |
| Figure A-2: Veterinary Hospital Locations..... | 25 |

ESF #11: Animal Response
Process Flow Chart
Planned Event

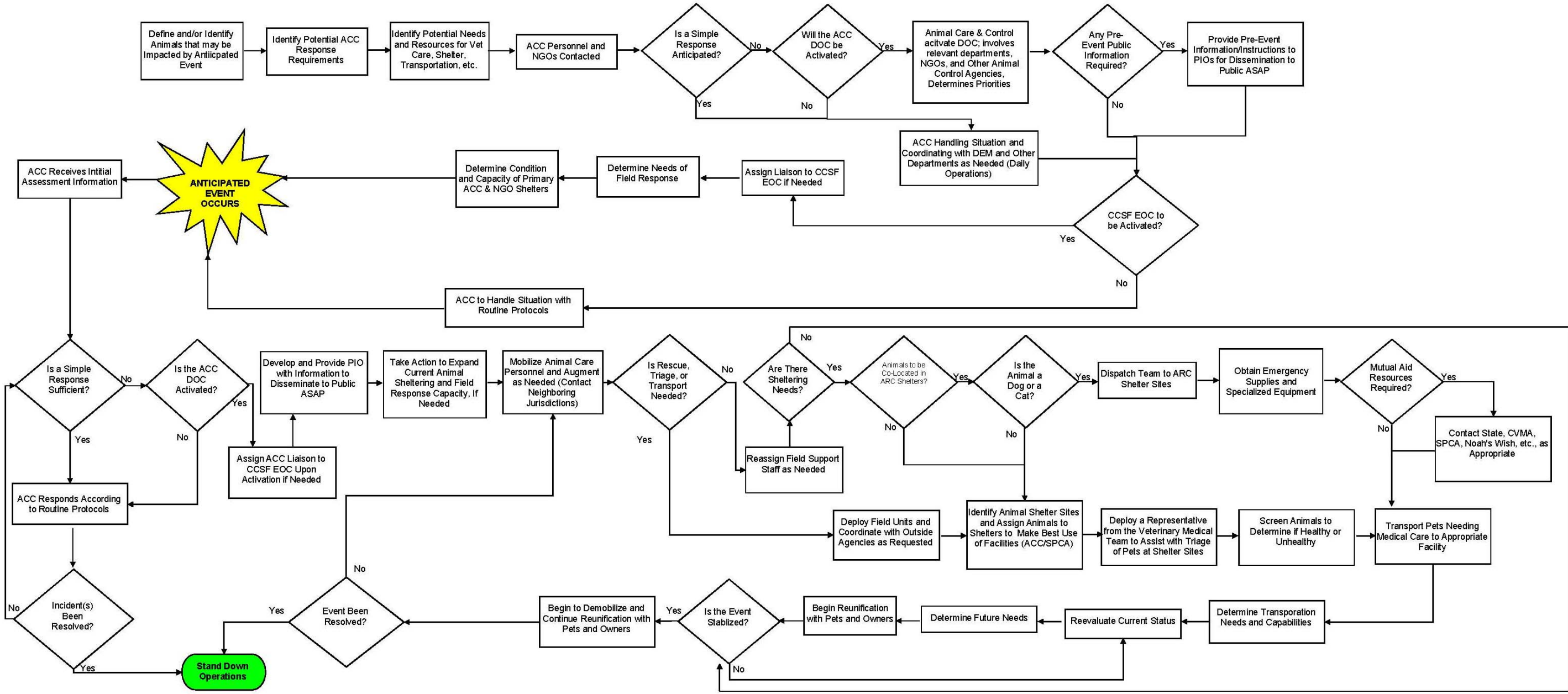


Figure A: Planned Event Process Flow Chart

ESF #11: Animal Response
 Process Flow Chart
 Unplanned Event

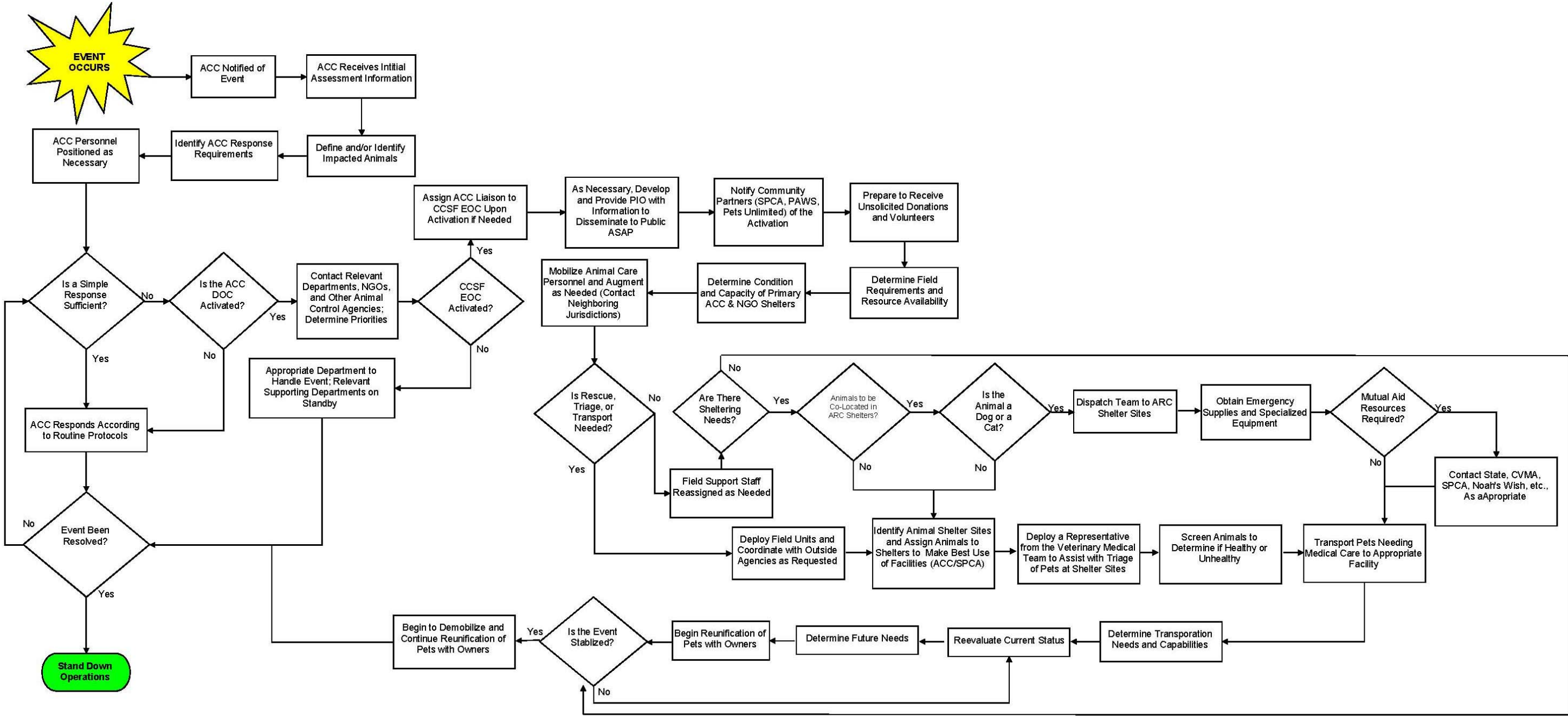


Figure B: Unplanned Event Process Flow Chart



Section I: Introduction

1.1 Coordinating and Supporting Departments

| | |
|--------------------------------|--|
| Coordinating Department | ACC |
| Supporting Departments | 311, ARC, DEM, DPH, DPW, HSA, RPD, SFFD, SFPD, SFZoo |

1.2 Overview of Department Responsibilities

| Department | Responsibilities |
|--|---|
| ACC | <ul style="list-style-type: none"> Assess animal care needs. Identify animal response requirements. Develop and provide PIOs with information to disseminate to the public. Coordinate the field response. Coordinate rescue and transport of animals from distressed areas. Coordinate the search of affected areas for animals. Coordinate the sheltering response. Staff the Animal Response Unit Leader position in the CCSF EOC Human Services Branch. |
| DEM | <ul style="list-style-type: none"> Support animal response operations as needed. |
| 311 ARC DPH DPW HSA RPD SFFD SFPD SFZoo | <ul style="list-style-type: none"> Identify zoonotics where public health may be at risk. Provide transport vehicles and personnel; assist with the staging of animal shelters. Provide space in greenbelt areas for spontaneous shelter-in-place and animal shelters. Communicate plans for evacuation and plans for animal shelters in proximity to human shelters. Support search and rescue of abandoned, lost, injured, or sick domestic animals. Communicate necessary animal care and shelter information to the public. |



1.3 Purpose

Emergency Support Function (ESF) #11: Animal Response provides guidance on the effective conduct of City and County of San Francisco (CCSF) animal care responsibilities prior to, during, and immediately following a significant, large-scale incident. The purpose of this function is to adequately respond to and recover from emergencies involving animals and wildlife, when feasible, within CCSF.

1.4 Scope

ESF #11: Animal Response supports CCSF animal care personnel by providing a structure in which to effectively direct, manage, and control animal response and recovery operations. This annex details the procedures, responsibilities, and concept of operations of ESF #11 during a potential, imminent, or declared emergency. Specific objectives are as follows:

- Coordinate domestic animal response and recovery activities, to include rescue, triage, medical treatment, transport, care, shelter, and domestic animal reunification
- Coordinate wildlife response and recovery activities, mitigating loss of life whenever possible
- Coordinate the identification and documentation of animals for effective reunification



Section 2: Concept of Operations

2.1 General Concepts

The Animal Response function is part of the Human Services Branch in the Operations Support Section, and is additionally tasked with coordinating the control and maintenance of companion animals, wild animals, and potential environmental risks as it relates to animals.

This Concept of Operations outlines the following elements of the Animal Response function:

- Public Information
- Field Response
- Animal Sheltering
- Animal Intake
- Reunification of Domestic Animals With Owner/Guardian
- Coordination with Other Agencies and Departments
- Organization and Structure
- Notification and Activation
- Deactivation Procedures

2.1.1 Public Information

Public Information is an essential response component during any type of an incident in which domestic animals may be impacted. During an ESF #11 activation, the Department of Animal Care and Control (ACC) will coordinate with its Public Information Officer (PIO) and/or ESF #15: Joint Information System (if activated) to provide public information regarding the following:

| | |
|-------------------|---|
| Pre-Event | <ul style="list-style-type: none"> • Evacuation directions and supplies • Sheltering locations • Information regarding reunification • Survival information |
| Post-Event | <ul style="list-style-type: none"> • Animal care and medical treatment information • Volunteer opportunities • Lost animals • Reunification procedures • Unclaimed animal policies |

Table 2-1: Public Information Priorities



There will be an ongoing need to provide the public with updated information as the incident progresses. For further details about public information dissemination, refer to the *ESF #15: Joint Information System Annex*.

2.1.2 Field Response

Overview

ESF #11 is organized to ensure rapid response to animal care needs in a disaster situation. During an event in which animal rescue, triage, and/or transport is needed, ACC field units will be deployed to the appropriate area to coordinate with supporting agencies, including the San Francisco Police Department (SFPD), San Francisco Sheriff's Department (SFSD), and San Francisco Fire Department (SFFD). Field response will be organized according to the National Incident Management System (NIMS) and the Incident Command System (ICS) to ensure a coordinated response. ACC field units will work with supporting agencies to conduct the following:

- Assess overall animal response needs
- Assess the safety of deploying units to rescue domestic animals
- Deploy units to rescue domestic animals from affected, evacuated, and/or otherwise unsafe areas
- Set up staging areas, field/mobile incident command, and support units deployed to rescue domestic animals
- Determine resource needs and submit resource requests, as appropriate
- Screen and triage animals
- Provide and/or coordinate basic emergency medical care for injured animals
- Arrange transportation to an appropriate facility for domestic animals needing advanced medical care, sheltering, and boarding
- Assist with containment and surveillance efforts

Triage

Triage is the process of sorting animals for emergency care, transportation, impoundment, euthanasia, and disposal. Animals may be triaged in the field to determine which animals must be evacuated to secondary triage areas. Animals may then be triaged a second time in a triage treatment area where a veterinarian and/or a registered veterinary technician is available. If not possible to triage, injured and sick animals will be transported for further treatment as soon as possible. An animal's primary triage category may change at any time. Stabilizing treatment may be initiated while awaiting transportation; however transport should not be delayed for treatment. When veterinary medical staff or ACC staff deems euthanasia necessary and humane, appropriate actions will be taken.

Transport

ACC and supporting ESF departments will coordinate transportation of animals from the field to triage areas, field hospitals, and/or operational animal facilities. Ongoing assessment will be



made to determine the type and number of transportation vehicles needed. This information will be relayed to the ACC Department Operations Center (DOC) or the ESF #11 (Animal Response Unit Leader) representative in the Emergency Operations Center (EOC), as appropriate.

Medical Treatment

Medical treatment of animals will be supported by the ACC Shelter Veterinarian with the aid of the San Francisco Society for the Prevention of Cruelty to Animals (SF/SPCA), the local San Francisco Veterinary Medical Association (SFVMA), and the regional disaster liaison from the California Veterinary Medical Association (CVMA). The ACC Operations Branch at the DOC will coordinate triage, staging, and transport needs of sick and injured animals; medical supplies and equipment will be acquired through the ACC Logistics Branch with cooperation from the SF/SPCA, SFVMA, CVMA, and EOC, if necessary.

Deceased Animals – Mass Fatality

Follow current procedures to the available capacity for the documentation and storage of deceased animals and the rendering of animal remains.

2.1.3 Animal Sheltering

Initially, domestic animals in need of housing will be accepted at and/or transported to the ACC and SF/SPCA compound at 15th Street and Harrison Street or 16th Street and Alabama Street in San Francisco. Depending on the severity of the imminent or actual event, it may be necessary to prepare for and operate additional animal shelters. Once it is determined that temporary animal shelters are needed, the following actions will apply:

| | |
|--------------------------------|---|
| <p>Shelter Location</p> | <ul style="list-style-type: none"> • Select shelter locations with the intention of serving those most impacted by the event by communicating with the Care and Shelter Branch at the Human Services Agency [HSA] DOC to determine where shelters for displaced persons may be opening. • Inspect shelter facilities and grounds for feasibility, size of animal containment areas, safety, and security. |
| <p>Supplies</p> | <ul style="list-style-type: none"> • Ensure adequate supplies are available to support the shelters. • Obtain appropriate intake forms and office supplies. |
| <p>Staffing</p> | <ul style="list-style-type: none"> • Identify, orient, and assign shelter staff to work in 12-hour shifts. • Identify shelter manager and assign shelter positions to staff and credentialed volunteers. • Create work and rest schedules for staff and credentialed volunteers. • Create ongoing task lists. |
| <p>Special Needs</p> | <ul style="list-style-type: none"> • In accordance with legal directives, house service and assistance dogs with their owners/guardians in human shelters. Support for these owners and animals may be requested through the ACC DOC or the Animal Response Unit Leader in the EOC. |

Table 2-2: Animal Sheltering Priorities



If American Red Cross (ARC) shelters are open for human evacuees, a determination will be made regarding the feasibility of co-locating animals at shelters. If co-location is an option, animal response teams will be dispatched to ARC shelter sites and arrangements will be made to obtain emergency supplies and any specialized equipment needed to care for the animals.

If co-location is not an option, or if the animal is neither a dog or cat, alternative animal shelter sites will be identified and animals will be assigned to the most appropriate shelter. A representative from the ACC veterinary medical team will be deployed to all shelter sites to assist with the triage and screening of animals to determine if they are healthy or unhealthy, and the transport of pets needing medical care to the appropriate facility.

Shelters where animals may be co-located are shown in the below figure. A complete listing of each shelter can be found in *Appendix A: Animal Co-Location Shelter Sites*.

2.1.4 Animal Intake

As animals are received in sheltering or medical facilities, pet owners must fill out appropriate paperwork detailing pet and owner information. The following must be identified:

- Owner/guardian contact information
- Alternative contact individuals
- Animal description
- Digital photograph of the animal (if available)
- Vaccination information
- Special needs information
- Bite information
- Microchip/tattoo information
- Signed agreement and waiver

2.1.5 Reunification of Pets with Owners

An identification and tracking process will be used during the animal's stay in the emergency shelter. When the animal has been treated or no longer has sheltering needs, owners will be contacted to reunite them with their pets. Upon arrival at the facility, owners/guardians will be required to present proper personal identification and affirmatively identify their animal by providing an accurate description of their pet, viewing and identifying their pet in photos, or by being escorted through existing shelter areas to identify their pet. If an owner is unable to provide the primary identification needed to claim his or her pet, a secondary means of identification—such as vet records, photos of owners with the pet, microchip information, or a letter from a veterinarian with a description of the animal—is acceptable. If the owner is unable to find his or her pet, a lost animal report will be filed with ACC detailing the description of the animal, its last known location, and the owner's current contact information.



For owners or pets needing reunification after temporary shelters have been closed, the following policies apply:

- Those looking for lost animals will fill out a detailed lost animal report prior to viewing stray animals.
- Owned and stray animals not reclaimed within a reasonable period time will be considered abandoned and may be placed for foster care or adoption. Depending on the nature of the event, this period may range from 30 – 180 days.
- An alternate process for proving ownership will be developed for those instances when personal identification and animal intake forms may have been lost during a disaster.
- If possible, deceased or euthanized animals will be photographed for discreet viewing by persons looking for their lost animals.

2.1.6 Coordination With Other Agencies and Departments

EOC Coordination

During an event requiring an EOC activation, ESF #11 responsibilities will be enacted by the Animal Response Unit Leader through the EOC Human Services Branch. The Animal Response Unit Leader will maintain communication and coordination with all departments and ESFs relevant to the situation, and will be the primary conduit of information between the ACC DOC and the EOC. Within the EOC, the Animal Response Unit Leader will ensure that any activities potentially impacting domestic animals, such as human evacuation and sheltering, are taken into consideration and properly coordinated. ESFs that the Animal Response Unit Leader will commonly coordinate with are as follows:

- ESF #6: Mass Care, Housing, and Human Services
- ESF #8: Public Health and Medical Services
- ESF #9: Urban Search and Rescue
- ESF #13: Law Enforcement
- ESF #14: Recovery and Mitigation

It is particularly imperative that channels of communication exist among fire, law enforcement, and ACC under ESF #9 involving search, rescue, and evacuation related to domestic animals. A cadre of Neighborhood Emergency Response Team (NERT) volunteers who are committed to domestic animal issues has been put into place on a district-by-basis to ensure communication to the ACC DOC at the neighborhood level.

Mutual Aid Coordination

Due to the limited number of resources that exist within any single department and CCSF animal-related NGOs (e.g., SF/SPCA, Pets Unlimited Hospital, Pets Are Wonderful Support [PAWS], San Francisco Community Clinic Consortium's Veterinary Street Outreach Services [SFCCC/VET SOS], SFVMA) during an event impacting animals within the San Francisco, there may be a need to obtain additional resources, supplies and/or personnel, from other agencies



outside the city through the execution of mutual aid agreements. In the instance that mutual aid resources are needed, the following organizations may be contacted:

| Local | State / National |
|------------------------------------|---|
| Contra Costa Animal Services | American Humane Association |
| Los Angeles County Animal Services | American SPCA |
| Marin Humane Society | California Animal Response in an Emergency System |
| Peninsula Humane Society and SPCA | Humane Society of the United States |
| Sacramento County Animal Services | Noah's Wish |
| San Diego County Animal Services | |
| San Jose Animal Services | |

2.1.7 Volunteer / Donations Management

During a sizeable event affecting San Francisco, volunteer interest will be high. The following are categories of volunteers that may be available to assist with ESF #11 operations:

- Trained Volunteers:** Several animal-focused organizations either have members or have access to individuals who are skilled in veterinary services and are familiar with appropriate animal handling methods. During an emergency, these volunteers may be called upon to assist with animal response operations by their respective organizations. Local organizations that have access to trained volunteers are the SF/SPCA, Pets Unlimited, PAWS, NERT, SFVMA, and SFCCC/VET SOS.
- Disaster Service Workers:** All CCSF employees are designated by both State and City law as Disaster Service Workers (DSWs). In the event of an emergency, public employees may be assigned to serve as DSWs to perform activities that promote the protection of public health and safety or the preservation of lives and property.
- Convergent Volunteers:** It is anticipated that concerned citizens will spontaneously volunteer to assist with animal care services. In order for these convergent volunteers to be utilized, all must be registered through the Emergency Volunteer Center. In the event that unregistered volunteers arrive at ACC, a shelter site, or any other such area, they will be directed to the Emergency Volunteer Center. If the Emergency Volunteer Center has not yet been established, convergent volunteers will be directed to helpbayarea.org.

For further information about volunteer coordination activities, refer to the *City and County of San Francisco Volunteer Management Plan*.



2.2 Animal Response Organization and Structure

2.2.1 Organization

The animal response function encompasses support from a variety of CCSF departments and outside agencies to ensure that animal needs are addressed in a coordinated manner. Figure 2-1 depicts the relationship between ESF #11 and the various CCSF departments and outside entities involved with animal response.

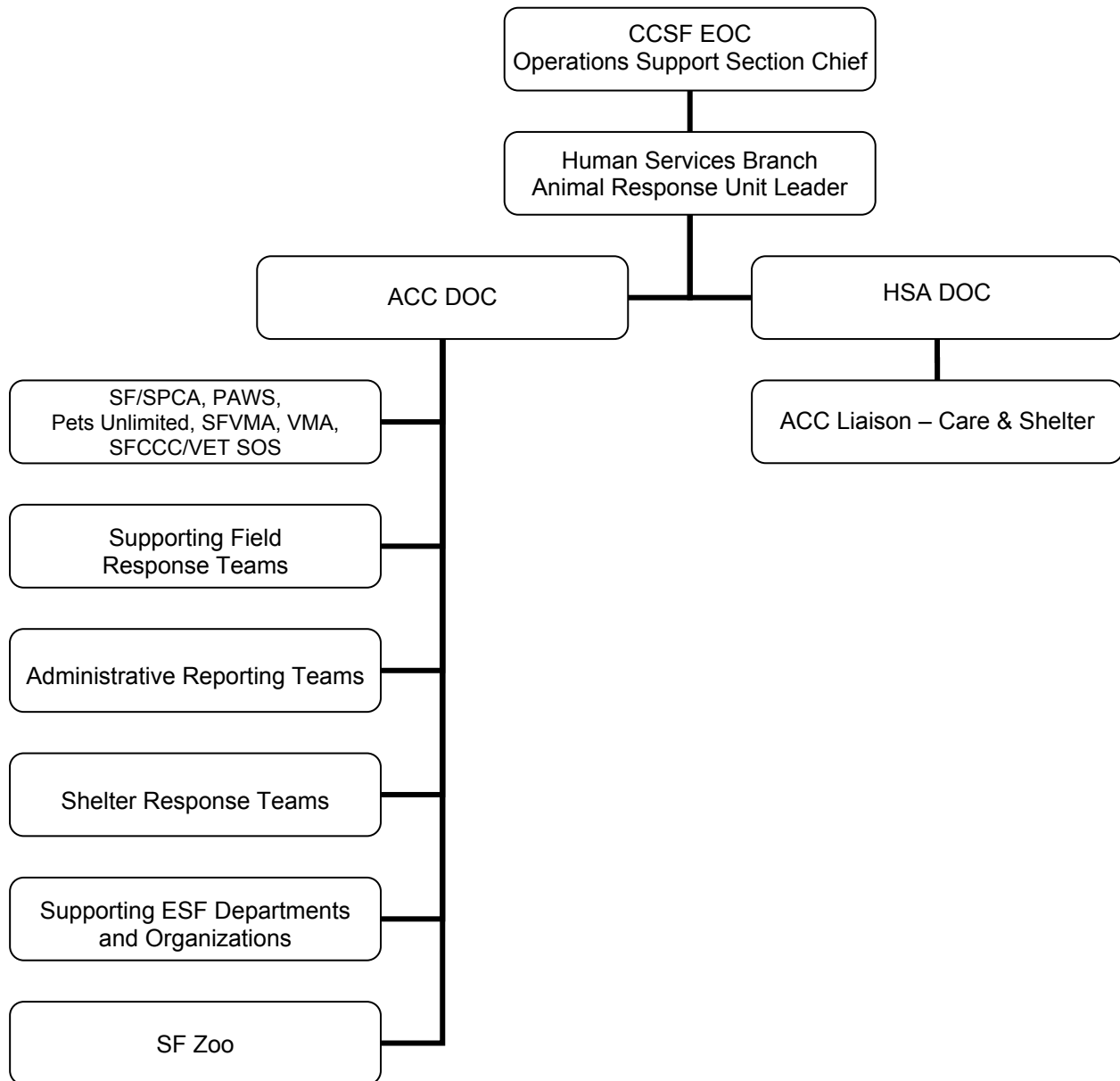


Figure 2-1: ESF #11 Organization



2.2.2 Animal Response Roles and Responsibilities

Table 2-1 details the overall roles and responsibilities of each entity involved with ESF #11.

| Entity | Roles and Responsibilities |
|--------|--|
| ACC | <ul style="list-style-type: none"> • Coordinate the response to animal-related issues • Communicate response status updates and needs to the EOC • Provide information to the public through the PIO • Ensure the NGO involvement follows FEMA guidelines • Expand animal sheltering capacity, as needed • Expand field search and rescue, as needed |
| ARC | <ul style="list-style-type: none"> • Request support from ACC when pet sheltering needs arise |
| DEM | <ul style="list-style-type: none"> • Support ACC efforts in responding to animal needs • Communicate the availability of resources toward animal efforts • Assist with identification of storage for spontaneous donations • Provide community situation status information |
| DPH | <ul style="list-style-type: none"> • Determine the impact of animal issues on public health • Communicate concerns to ACC • Plan a unified response to public health concerns |
| DPW | <ul style="list-style-type: none"> • Provide resources, vehicles, supplies, and equipment for the maintenance of multiple field operations: including staging areas, field veterinary hospitals, field animal shelters, and transport of supplies and equipment to these outposts |
| HSA | <ul style="list-style-type: none"> • Communicate needs for animal shelters in mass care shelters to the ACC DOC or EOC Human Services Branch • Communicate needs for ongoing or planned evacuations to the ACC DOC or EOC Human Services Branch • Provide vehicles and support personnel for the movement of animals from one part of CCSF to another |
| SFFD | <ul style="list-style-type: none"> • Assist with search, rescue and evacuation related to domestic animals • Provide NERT volunteers to ensure communication to the ACC DOC on a neighborhood level during an event |
| SFPD | <ul style="list-style-type: none"> • Assist with search, rescue and evacuation related to domestic animals |
| SF Zoo | <ul style="list-style-type: none"> • Communicate situation status and resource requests through the ACC DOC to the EOC |



| Entity | Roles and Responsibilities |
|--|--|
| CARES | <ul style="list-style-type: none"> • Bring State resources to the event • Activate the California Department of Fish and Game |
| PAWS | <ul style="list-style-type: none"> • Coordinate the use of trained volunteers during animal response operations (PAWS volunteers and those who are sent by ACC) |
| Pets Unlimited | <ul style="list-style-type: none"> • Provide emergency medical care, hospitalization , and medical sheltering • Coordinate the use of Pets Unlimited trained volunteers |
| SF/SPCA | <ul style="list-style-type: none"> • Provide emergency shelter, as needed • Provide emergency veterinary care • Identify, train, and issue credentials to spontaneous volunteers • Participate in the ICS command structure and leadership during an event • Coordinate veterinary triage teams both at SF/SPCA and ACC |
| SFVMA/CVMA | <ul style="list-style-type: none"> • Provide veterinary medical personnel, equipment, supplies, and the use of private practice veterinary hospitals, if necessary, for housing animals impacted by an event • Coordinate the use of trained volunteers during animal response operations |
| SFCCC/VET SOS | <ul style="list-style-type: none"> • Assist with animal rescue, feeding and veterinary care during animal response operations • Assist ACC in the coordination of veterinary triage teams • Coordinate the use of SFCCC/VET SOS trained volunteers and/or highly skilled veterinary medical volunteers |
| Mutual Aid from Neighboring Communities | <ul style="list-style-type: none"> • Respond with trained personnel, vehicles, and equipment, as needed • Transport supplies and equipment from outside the area • Transport domestic animals to neighboring communities for sheltering following established protocols • Provide leadership relief, if necessary |
| Human Services Branch Coordinator | <ul style="list-style-type: none"> • Coordinate the number and type of adjunct animal shelters set up near human shelters • Coordinate food and water to personnel, staff, and volunteers • Coordinate the co-location of human sheltering and pet sheltering with ARC |



| Entity | Roles and Responsibilities |
|---|--|
| <p>Animal Response Unit Leader¹</p> | <ul style="list-style-type: none"> • Lead representative for ESF #11 in the EOC • Coordinating and communicating with ACC DOC and providing information to the Operations Support Section Chief regarding animal related issues • Coordinating with the Joint Information Center (JIC) and providing public information needs • Coordinating with Logistics Section regarding needed resources • Coordinating with Planning Section to obtain overall situation status • Providing situation status reports to the Human Services Branch Coordinator |

Table 2-3: Animal Response Responsibilities

¹ EOC Human Services Branch Position



2.3 Notification and Activation

2.3.1 Notification

In the event of an impending or actual event impacting animals within San Francisco, ACC in coordination with DEM will determine the activation needs of ESF #11. Notification will then be issued to all relevant supporting ESF #11 departments, and to any additional departments or agencies as required. Notification will be issued through the most appropriate communications equipment for the event requirements, and will detail event information, reporting instructions, and any relevant coordination information. Upon notification of an event, ACC will begin planning efforts, to include:

- Defining impacted animals
- Identifying potential response requirements and needs
- Placing all ACC personnel on standby and/or staffing appropriate positions, as necessary
- Determining ACC DOC activation and staffing requirements

2.3.2 Activation

ESF #11 may be activated by the DEM Duty Officer, ACC, or EOC Manager when an event affecting the CCSF animal population is anticipated or has occurred. The level of activation will be determined according to the requirements of the event. If the determination is made to activate the ACC DOC, notification to the following departments, NGOs, and community partners may be necessary:

- SF/SPCA, Pets Unlimited Hospital, PAWS, SFCCC/VET SOS, CVMA
- Peninsula Humane Society, Marin Humane Society, San Jose Animal Services, Contra Costa Animal Services
- Standby: Sacramento County Animal Services, Los Angeles County Animal Services, San Diego County Animal Services
- Standby: Berkeley Humane Society, Oakland Animal Services, Sonoma County Animal Services, Santa Cruz Animal Services, Monterey SPCA
- Standby: In an expanding incident, beyond region and State control, national organizations may be notified

Scalable Activation

ESF #11 operations will increase or decrease based on the type and nature of the emergency and the magnitude of the event. The type and level of activation is generally based on an event's resource or staffing requirements and the impact on the community. The below table illustrates a scalable emergency response activation according to event type.



| Emergency Situation | Examples | Coordinating Department | Placement of ESF #11 Staff |
|----------------------------------|--|---|---|
| Planned Event (Simple) | Notification of a potential impact to CCSF animal population | Animal Care and Control | <ul style="list-style-type: none"> • Field • DOC |
| Planned Event (Complex) | Notification of a potential large-scale event requiring ACC resources and personnel, involving support agencies and EOC activation | Animal Care and Control | <ul style="list-style-type: none"> • Field • DOC • EOC |
| Unplanned Event (Simple) | Notification of an actual event requiring ACC coordination | Animal Care and Control | <ul style="list-style-type: none"> • Field • DOC |
| Unplanned Event (Complex) | Notification of a large-scale event requiring ACC resources and personnel, involving support agencies and EOC activation | Animal Care and Control, Department of Emergency Management, Mayor's Office | <ul style="list-style-type: none"> • Field • DOC • EOC |

Table 2-4: Scalable Animal Response Activation

2.3.3 Response Actions

Step 1: Secure Incident Site

When notified of an event affecting the CCSF animal population, ACC will perform the following actions:

- Assess and determine impacted animals
- Identify animal response staffing and resource requirements
- Alert and deploy appropriate field units as necessary

Step 2: Activate DOC; Alert EOC (as Necessary)

Activation of the DOC and/or the EOC involves, but is not limited to, the following:

- If activated, send departmental representatives to EOC
 - Assign Animal Response Unit Leader responsibilities to the most appropriate personnel
- Determine mutual aid needs
 - Contact the State, CVMA, ASPCA, Noah's Wish, etc., as appropriate
- Notify and request assistance from supporting departments, NGOs and other agencies



- Notify community partners (SF/SPCA, PAWS, Pets Unlimited, SFCCC/VET SOS) of activation

Step 3: Gather Information

- Determine the condition and capacity of primary ACC and community partner animal shelters
- Determine whether rescue, triage, and transport requirements are needed
- Determine animal sheltering needs
- Determine whether or not animals will be co-located in American Red Cross shelters once activated
 - Divide animals into dog or cat categories
 - Dispatch a team to the ARC shelter sites
- Determine transportation needs and capabilities

Step 4: Analyze Information and Coordinate Response

- Take action to expand current animal sheltering and field response capacity, if needed
- Mobilize animal care personnel and augment staff, as needed (contact neighboring jurisdictions)
- Prepare to receive unsolicited donations and volunteers
- Deploy a representative from the veterinary medical team to assist with triage of pets at shelter sites

Step 5: Obtain Resources, Release Public Information

- Request emergency supplies and specialized equipment through the DOC, EOC, and/or supporting departments as necessary
- Identify animal shelter sites and assign animals to shelters to make the best use of facilities (e.g., ACC, SF/SPCA)
- Disseminate emergency information and guidance to the public, private, and government organizations

Step 6: Continue to Monitor, Track, and Inform

- Receive and respond to requests for information
- Provide situation updates, as necessary
- Re-evaluate the current situation status
- Determine future needs, as appropriate



2.3.4 Deactivation

ESF #11 will be deactivated when the need for advanced animal response coordination has either diminished or ceased. ESF #11 functions may be deactivated or scaled back at the discretion of the ACC Director, EOC Manager, or Operations Support Section Chief, as appropriate. After the decision to deactivate has been determined, the following activities may be necessary:

- Complete or transfer remaining ESF #11 responsibilities to the appropriate department(s)
- Provide deactivation information to all involved supporting ESF departments
- Inventory, return to owner, or properly dispose of remaining supplies
- Issue a final status report to the Operations Support Section Chief
- Coordinate deactivation with the Operations Support Section Chief, to include staff release, equipment return, and inventory
- Coordinate deactivation with the ACC DOC
- Ensure that a debrief is held between key staff, volunteers, and involved CCSF departments
- Continue ongoing efforts for reunification as necessary



Section 3: Planning Assumptions

The following planning assumptions apply to ESF #11: Animal Response:

- All appropriate CCSF agencies and departments will be involved in emergency operations consistent with their functions and responsibilities with respect to emergency/disaster domestic animal issues.
- Coordination with CCSF departments, supporting ESF departments, outside agencies and/or volunteers, will be critical to successfully meet emergency needs of domestic animals.
- The definition of a “domestic animal” is “a companion animal of any sort.”
- The San Francisco Zoo currently has its own emergency plan that will be activated during an event that affects the zoo.
- Because there are more domestic animals per capita in San Francisco than in most other urban areas, by nearly two to three times, there is a public expectation that the CCSF will provide care, shelter, and treatment for domestic animals impacted by an emergency event.
- Information contained in this annex is consistent with other local animal care plans such as the Bay Area Urban Area Security Initiative (UASI) Animal Care and Shelter Disaster Planning Operations Guide.
- Large amounts of convergent volunteers and donations will be expected during a major event in San Francisco. Detailed volunteer and donations management procedures may be found in the *San Francisco Volunteer Management Plan*.

This page is intentionally blank.



List of Abbreviations and Acronyms

The following abbreviations and acronyms are used in this annex:

| | |
|-----------|--|
| ACC | Animal Care and Control |
| AHA | American Humane Society |
| ARC | American Red Cross |
| ASPCA | American Society of the Prevention of Cruelty to Animals |
| CARES | California Animal Response in Emergency System |
| CBO | Community-Based Organization |
| CCSF | City and County of San Francisco |
| CVMA | California Veterinary Medical Association |
| DEM | Department of Emergency Management |
| DOC | Departmental Operations Center |
| DOE | Department of the Environment |
| DPH | Department of Public Health |
| DPW | Department of Public Works |
| DSW | Disaster Service Worker |
| EMS | Emergency Medical Services |
| EOC | Emergency Operations Center |
| ERD | Emergency Response District |
| ESF | Emergency Support Function |
| FEMA | Federal Emergency Management Agency |
| HSA | Human Services Agency |
| ICS | Incident Command System |
| JIC | Joint Information Center |
| NERT | Neighborhood Emergency Response Team |
| NGO | Non-Governmental Organization |
| NIMS | National Incident Management System |
| PAWS | Pets Are Wonderful Support |
| PIO | Public Information Officer |
| RPD | Recreation and Parks Department |
| SF/SPCA | San Francisco Society of the Prevention of Cruelty to Animals |
| SFCCC/VET | San Francisco Community Clinic Consortium's Veterinary Street Outreach |
| SOS | Services |
| SFFD | San Francisco Fire Department |
| SFPD | San Francisco Police Department |
| SFSD | San Francisco Sheriffs Department |

City and County of San Francisco
Emergency Support Function #11
Animal Response Annex



- SFUSD San Francisco Unified School District
- SFVMA San Francisco Veterinary Medical Association
- SFZoo San Francisco Zoo
- UASI Bay Area Urban Area Security Initiative



Appendix A: Animal Co-Location Shelter Sites

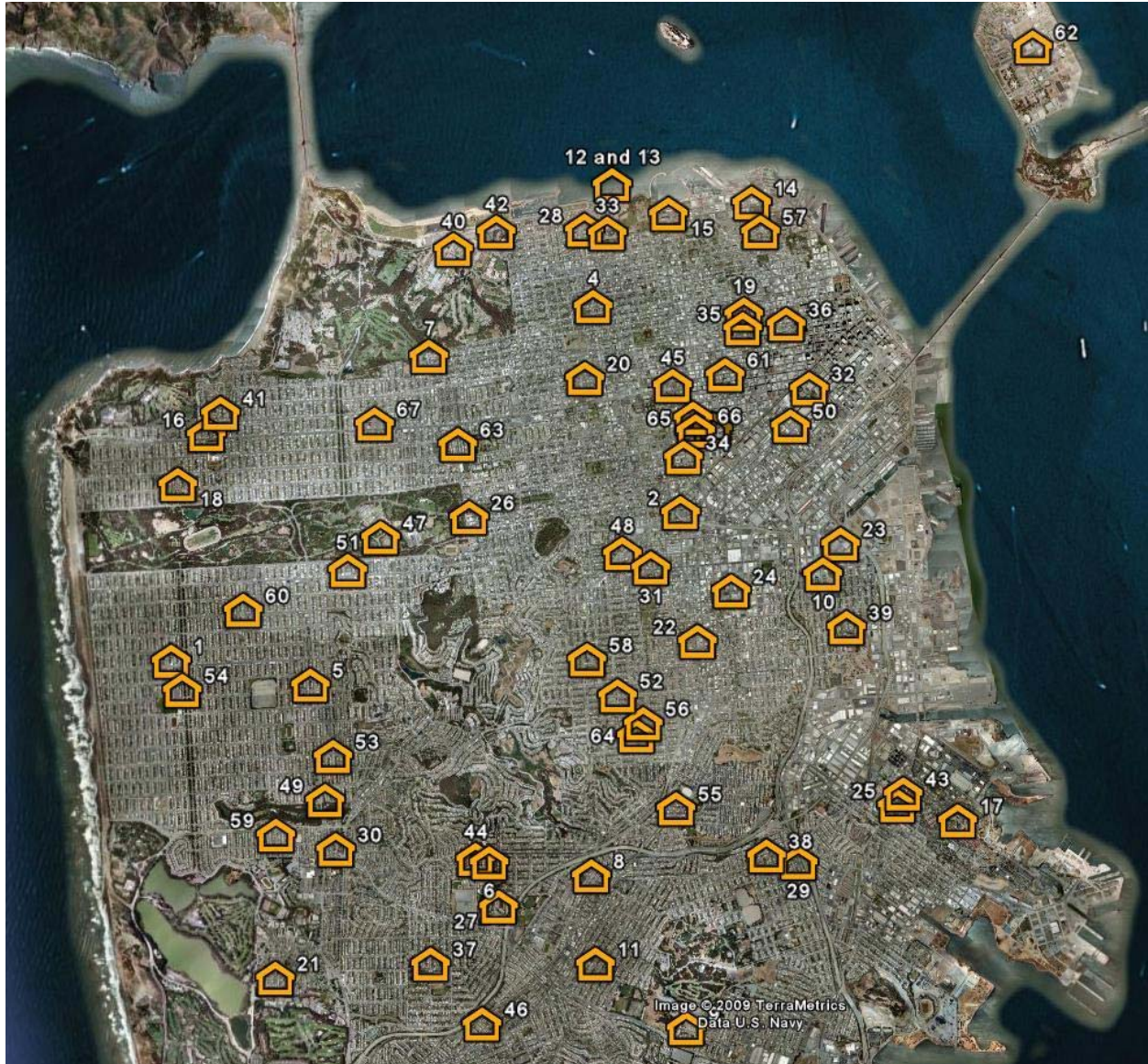


Figure A-1: Animal Co-Location Shelter Sites

This page is intentionally blank.

City and County of San Francisco
Emergency Support Function #11
Animal Response Annex



| # | Site Name | Address | Zip Code | ERD |
|-----|--|--|----------|-----|
| 1. | A. P. Giannini Middle School | 3151 Ortega Street | 94122 | 8 |
| 2. | Annunciation Greek Orthodox Cathedral | 245 Valencia Street | 94103 | 2 |
| 3. | Bill Graham Civic Auditorium | 99 Grove Street | 94102 | 2 |
| 4. | Calvary Presbyterian Church | 2515 Fillmore Street | 94115 | 4 |
| 5. | Christ Church Lutheran ELCA | 1090 Quintara Street | 94116 | 8 |
| 6. | City College of San Francisco | 50 Phelan Avenue | 94112 | 9 |
| 7. | Congregation Emanu-El | 2 Lake Street | 94118 | 7 |
| 8. | Corpus Christi Church | 62 Santa Rosa Avenue | 94112 | 9 |
| 9. | Cow Palace | 2150 Geneva Avenue | 94014 | 9 |
| 10. | Enola Maxwell Middle School of the Arts | 655 De Haro Street | 94107 | 10 |
| 11. | Epiphany Elementary | 600 Italy Avenue | 94112 | 9 |
| 12. | Fort Mason Center Festival Pavillion Pier 3 | Buchanan Street & Marina Boulevard | 94123 | 4 |
| 13. | Fort Mason Center Herbst Pavillion Pier 2 | Pier 2 Buchanan Street & Marina Boulevard | 94123 | 4 |
| 14. | Francisco Middle School | 2190 Powell Street | 94133 | 1 |
| 15. | Galileo High School | 1150 Francisco Street | 94109 | 4 |
| 16. | George Washington High School | 600 32nd Avenue | 94121 | 7 |
| 17. | Gloria R. Davis Middle School | 1195 Hudson Avenue | 94124 | 10 |
| 18. | Golden Gate Park Senior Center | 6101 Fulton St | 94121 | 7 |
| 19. | Grace Cathedral | 1100 California Street | 94108 | 1 |
| 20. | Hamilton Rec Center | 1900 Geary | 94115 | 4 |
| 21. | Holy Trinity Greek Orthodox Church | 999 Brotherhood Way | 94132 | 8 |
| 22. | Horace Mann Middle School | 3351 23rd Street | 94110 | 6 |
| 23. | Jackson Clubhouse | 17th and Arkansas St | 94107 | 3 |
| 24. | John O'Connell High School | 2355 Folsom Street | 94110 | 6 |
| 25. | Joseph Lee Rec Center | 1395 Mendell St. | 94124 | 10 |
| 26. | Kezar Pavilion | 755 Stanyan St | 94117 | 5 |
| 27. | Lick-Wilmerding High School | 755 Ocean Avenue | 94112 | 9 |
| 28. | Marina Middle School | 3500 Fillmore Street | 94123 | 4 |
| 29. | Martin Luther King Middle School | 350 Girard Street | 94134 | 10 |
| 30. | Mercy High School | 3250 19th Avenue | 94132 | 9 |
| 31. | Mission High School | 3750 18th Street | 94114 | 2 |
| 32. | Moscone Center North & South | 747 Howard Street | 94103 | 3 |
| 33. | Moscone Rec Center | 1800 Chestnut | 94123 | 4 |
| 34. | NCIS (French-American International School) | 150 Oak Street | 94102 | 2 |

City and County of San Francisco
Emergency Support Function #11
Animal Response Annex



| # | Site Name | Address | Zip Code | ERD |
|-----|--|---------------------------|----------|-----|
| 35. | Nob Hill Masonic Auditorium | 1111 California Street | 94108 | 1 |
| 36. | Notre Dame Des Victoires Church | 566 Bush Street | 94108 | 1 |
| 37. | Ocean View Rec Center | 650 Capitol Ave | 94112 | 9 |
| 38. | Palega Recreation Center | 500 Felton | 94134 | 9 |
| 39. | Potrero Hill Rec Center | 801 Arkansas Street | 94107 | 10 |
| 40. | Presidio Community YMCA | 63 Funston Avenue | 94129 | 11 |
| 41. | Presidio Middle School | 450 30th Avenue | 94121 | 7 |
| 42. | Presidio YMCA Letterman Gym | 1152 Gorgas Street | 94118 | 11 |
| 43. | Providence Baptist | 1601 McKinnon Avenue | 94124 | 10 |
| 44. | Riordan High School | 175 Phelan Avenue | 94112 | 9 |
| 45. | Sacred Heart Cathedral Preparatory | 1055 Ellis Street | 94109 | 2 |
| 46. | San Francisco Christian Center | 5845 Mission Street | 94112 | 9 |
| 47. | San Francisco County Fair Building | 9th Ave & Lincoln Way | 94122 | 7 |
| 48. | Sanchez Elementary School | 325 Sanchez Street | 94114 | 2 |
| 49. | Scottish Rite Masonic Center | 2850 19 th Ave | 94132 | 8 |
| 50. | SOMA Eugene Friend Rec Center | 270 6th Street | 94103 | 3 |
| 51. | St. Anne's Church | 850 Judah Street | 94122 | 8 |
| 52. | St. Anthony's Church | 3215 Cesar Chavez Street | 94110 | 6 |
| 53. | St. Cecilia Church | 2555 17th Ave | 94116 | 8 |
| 54. | St. Ignatius College Preparatory | 2001 37th Ave | 94116 | 8 |
| 55. | St. Mary's Rec Center | 95 Justin Dr. | 94112 | 6 |
| 56. | St. Paul's Catholic Church | 221 Valley Street | 94131 | 6 |
| 57. | St. Peter and Paul Church | 666 Filbert Street | 94133 | 1 |
| 58. | St. Philip's Church | 725 Diamond Street | 94114 | 6 |
| 59. | Stonestown Family YMCA | 3333 Eucalyptus Drive | 94132 | 8 |
| 60. | Sunset Rec Center | 2225 Lawton St. | 94122 | 8 |
| 61. | Tenderloin Rec Center | 570 Ellis Street | 94102 | 2 |
| 62. | Treasure Island Nimitz Conference Room | Treasure Island | 94130 | 13 |
| 63. | University of San Francisco - Koret Center | 222 Stanyan Street | 94118 | 5 |
| 64. | Upper Noe Rec Center | 295 Day St | 94131 | 6 |
| 65. | Veteran's Building (War Memorial) | 401 Van Ness Avenue | 94102 | 2 |
| 66. | War Memorial Opera | 301 Van Ness Avenue | 94102 | 2 |
| 67. | Zion Lutheran Church | 495 9th Avenue | 94118 | 7 |



Appendix B: Veterinary Hospitals

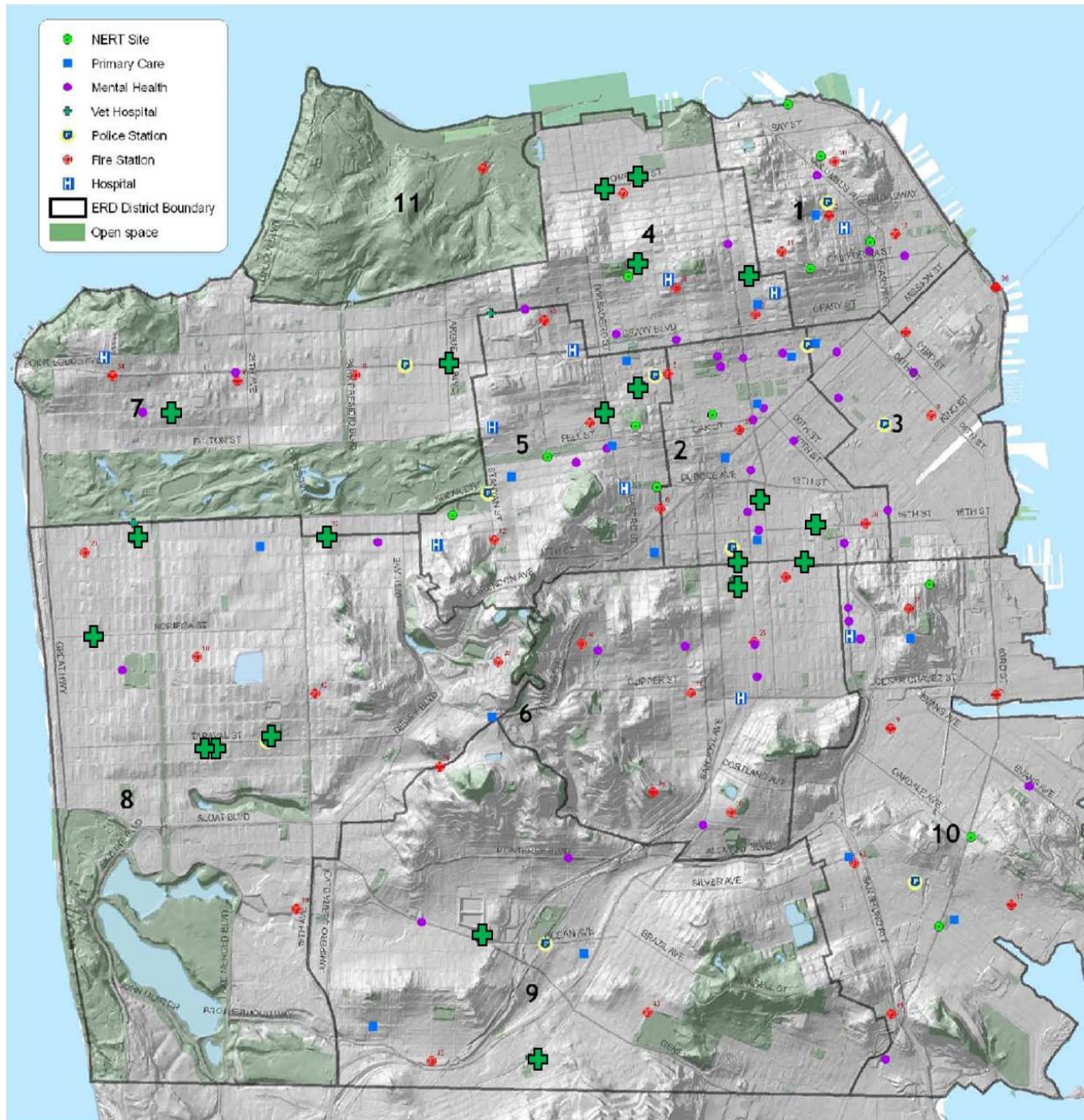


Figure A-2: Veterinary Hospital Locations

This page is intentionally blank.

City and County of San Francisco
 Emergency Support Function #11
 Animal Response Annex



| Hospital | Address | Phone |
|-------------------------------------|--------------------------|----------|
| All Animals Emergency Hospital | 1333 9 th Ave | 837-1011 |
| All Pets Hospital | 269 So. Van Ness | 861-5725 |
| Animal Farm Pet Hospital | 5601 Mission St | 333-0813 |
| Animal Hospital of Diamond Heights | 5264 Diamond Heights | 920-6980 |
| Arguello Pet Hospital | 530 Arguello Blvd | 751-3242 |
| Avenues Pet Hospital | 2221 Taraval | 681-4313 |
| Balboa Pet Hospital | 3329 Balboa | 752-3300 |
| Bay Area Bird Hospital | 2145 Taraval | 566-4359 |
| Blue Cross Pet Hospital | 1386 Golden Gate Ave | 931-5550 |
| Epecially Cats Veterinary Hospital | 1339 Taraval | 681-5553 |
| Irving Street Veterinary Hospital | 1434 Irving St | 664-0191 |
| Lombard Pet Hospital | 2308 Lombard | 567-1550 |
| Marina Pet Hospital | 2024 Lombard | 921-0410 |
| Mission Pet Hospital | 720 Valencia | 552-1969 |
| Nob Hill Cat Clinic & Hospital | 1540 California | 776-6122 |
| Ocean Ave Veterinary Hospital | 1001 Ocean Ave | 586-5327 |
| Ocean Beach Veterinary Clinic | 3619 California | 422-0107 |
| Park Animal Hospital | 1207 9 th Ave | 753-8485 |
| Pets Unlimited | 2343 Fillmore St | 563-6700 |
| Presidio Way Veterinary Hospital | 3619 California | 387-6752 |
| San Francisco Pet Hospital | 1371 Fulton | 931-8312 |
| San Francisco SPCA | 2500 16 th St | 554-3030 |
| San Francisco Veterinary Specialist | 600 Alabama | 401-9200 |
| Sunset Veterinary Hospital | 3741 Noriega | 753-2884 |
| Valencia Veterinary Clinic | 855 Valencia | 648-1222 |